

# NOT ALL MASKS ARE CREATED EQUAL

Due to our commitment to employee and patient safety regarding the COVID-19 outbreak; we continue to update and implement new company policies following recommendations of the Centers for Disease Control and Prevention (CDC) and Arizona Department of Health. We ask that you follow the guidelines below while in our offices

## CLOTH FACE MASKS



- Recommended by the CDC for use in public
- Effective at reducing spread of COVID 19
- Most effective when they fit snugly over the nose and mouth, use a thick material, multiple layers and a cotton blend.



## FACE SHIELDS



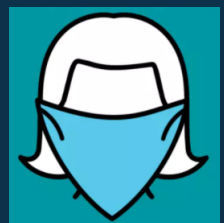
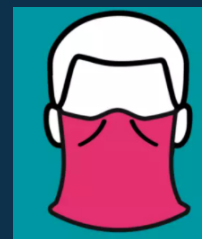
- Not recommended by CDC without a cloth facemask
- Not proven to reduce the spread of COVID 19
- Should wrap around the sides of the wearer's face and extend below the chin..



## NECK GAITORS / BANDANAS



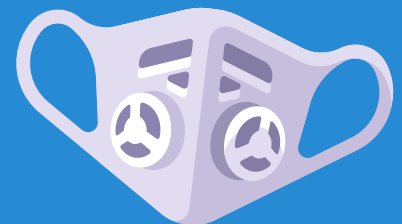
- Less effective at preventing droplet spread



## VALVE MASKS



- Puts others at risk from wearer's respiratory droplets that shoot out of the valve
- Specifically excluded from allowable masks under Maricopa County mask mandate



\*Exceptions may be made on the recommendations above



**Ironwood Cancer  
& Research Centers**

*Outsmarting Cancer One Patient at a Time*